

HME2 Rabbit Polyclonal Antibody

Description

Product type	Primary Antibody
Code	BT-AP10444
Host	Rabbit
Isotype	IgG
Size	100ul, 50ul, 20ul
Immunogen	Synthesized peptide derived from human HME2
Mol wt	36630
Species reactivity	Human, Mouse
Clonality	Polyclonal
Recommended application	WB
Concentration	1 mg/ml
Full name	HME2
Synonyms	HME2

This product is for research use only, not for use in human, therapeutic or diagnostic procedure.

Background

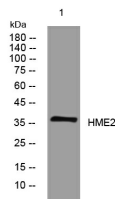
Homeobox-containing genes are thought to have a role in controlling development. In *Drosophila* the 'engrailed' (*en*) gene plays an important role during development in segmentation where it is required for the formation of posterior compartments. Different mutations in the mouse homologs *En1* and *En2* produced different developmental defects that frequently are lethal. The human engrailed homologs 1 and 2 encode homeodomain-containing proteins and have been implicated in the control of pattern formation during development of the central nervous system.

Recommended Dilution

WB: 1: 500 - 1: 2000

Not yet tested in other applications.

Images



Western blot analysis of lysates from K562 cells, primary antibody was diluted at 1:1000, 4°C overnight

Storage

-20°C for 1 year