

IP3R-I(Phospho Ser1764) Polyclonal Antibody

Description

Product type	Primary Antibody
Code	BT-AP10457
Host	Rabbit
Isotype	IgG
Size	20ul, 50ul, 100ul
Immunogen	The antiserum was produced against synthesized peptide derived from human IP3R1 around the phosphorylation site of Ser1764. AA range:1730-1779
Mol wt	313945
Species reactivity	Human, Mouse, Rat
Clonality	Polyclonal
Recommended application	WB, IHC-p, IF, ELISA
Concentration	1 mg/ml
Full name	Inositol 1,4,5-trisphosphate receptor type 1
Synonyms	Inositol 1,4,5-trisphosphate receptor type 1; ITPR1; INSP3R1; Inositol 1; 4,5-trisphosphate receptor type 1; IP3 receptor isoform 1; IP3R 1; InsP3R1; Type 1 inositol 1,4,5-trisphosphate receptor; Type 1 InsP3 receptor

This product is for research use only, not for use in human, therapeutic or diagnostic procedure.

Background

This gene encodes an intracellular receptor for inositol 1,4,5-trisphosphate. Upon stimulation by inositol 1,4,5-trisphosphate, this receptor mediates calcium release from the endoplasmic reticulum. Mutations in this gene cause spinocerebellar ataxia type 15, a disease associated with an heterogeneous group of cerebellar disorders. Multiple transcript variants have been identified for this gene.

Recommended Dilution

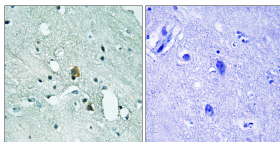
WB: 1: 500 - 1: 2000

IHC-p: 1: 100 - 1: 300

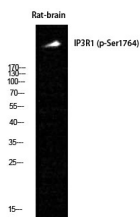
ELISA: 1: 5000

Not yet tested in other applications.

Images



Immunohistochemistry analysis of paraffin-embedded human brain, using IP3R1 (Phospho-Ser1764) Antibody. The picture on the right is blocked with the phospho peptide.



Western Blot analysis of Rat-brain cells using Phospho-IP3R-I (S1764) Polyclonal Antibody

Storage

-20°C for 1 year

501 Changsheng S Rd, Nanhu Dist, Jiaxing, Zhejiang, China

Tel: 86 21 31007137 | E-mail: save@bt-laboratory.com | www.bt-laboratory.com