

IPP-2(Phospho Ser44) Polyclonal Antibody

Description

Product type	Primary Antibody
Code	BT-AP10467
Host	Rabbit
Isotype	IgG
Size	20ul, 50ul, 100ul
Immunogen	Synthesized phospho-peptide around the phosphorylation site of human IPP-2 (phospho Ser44)
Mol wt	23015
Species reactivity	Human, Mouse, Rat
Clonality	Polyclonal
Recommended application	WB, IHC-p, IF, ELISA
Concentration	1 mg/ml
Full name	Protein phosphatase inhibitor 2
Synonyms	Protein phosphatase inhibitor 2; PPP1R2; IPP2; Protein phosphatase inhibitor 2; IPP-2

This product is for research use only, not for use in human, therapeutic or diagnostic procedure.

Background

Protein phosphatase-1 (PP1) is one of the main eukaryotic serine/threonine phosphatases. The protein encoded by this gene binds to the catalytic subunit of PP1, strongly inhibiting its activity. Ten related pseudogenes have been found throughout the human genome. Several splice variants encoding different isoforms have been found for this gene.

Recommended Dilution

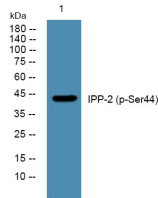
WB: 1: 500 - 1: 2000

IHC-p: 1: 100 - 1: 300

ELISA: 1: 40000

Not yet tested in other applications.

Images



Western blot analysis of lysates from K562 cells, primary antibody was diluted at 1:1000, 4°C overnight

Storage

-20°C for 1 year