

## IPP2L Polyclonal Antibody

### Description

<b>Product type</b>	Primary Antibody
<b>Code</b>	BT-AP10470
<b>Host</b>	Rabbit
<b>Isotype</b>	IgG
<b>Size</b>	20ul, 50ul, 100ul
<b>Immunogen</b>	Synthesized peptide derived from human protein . at AA range: 130-210
<b>Mol wt</b>	N/A
<b>Species reactivity</b>	Human, Rat, Mouse
<b>Clonality</b>	Polyclonal
<b>Recommended application</b>	WB, ELISA
<b>Concentration</b>	1 mg/ml
<b>Full name</b>	Putative protein phosphatase inhibitor 2-like protein 1
<b>Synonyms</b>	Putative protein phosphatase inhibitor 2-like protein 1 ;Protein phosphatase 1, regulatory subunit 2 pseudogene 1

This product is for research use only, not for use in human, therapeutic or diagnostic procedure.

### Background

PPP1R2P1 (Protein Phosphatase 1 Regulatory Inhibitor Subunit 2 Pseudogene 1) is a Pseudogene. GO annotations related to this gene include protein phosphatase inhibitor activity. Inhibitor of protein-phosphatase 1.

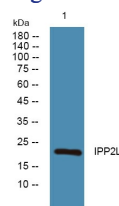
### Recommended Dilution

WB: 1: 500 - 1: 2000

ELISA: 1: 5000 - 1: 20000

Not yet tested in other applications.

### Images



Western blot analysis of lysates from HCT116 cells, primary antibody was diluted at 1:1000, 4°C overnight

### Storage

-20°C for 1 year