

IRK14 Polyclonal Antibody

Description

Product type	Primary Antibody
Code	BT-AP10499
Host	Rabbit
Isotype	IgG
Size	20ul, 50ul, 100ul
Immunogen	Synthesized peptide derived from human protein . at AA range: 350-430
Mol wt	N/A
Species reactivity	Human, Rat, Mouse
Clonality	Polyclonal
Recommended application	WB, ELISA
Concentration	1 mg/ml
Full name	ATP-sensitive inward rectifier potassium channel 14
Synonyms	ATP-sensitive inward rectifier potassium channel 14 ;Inward rectifier K _v ⁺ channel Kir2.4;IRK-4;Potassium channel, inwardly rectifying subfamily J member 14

This product is for research use only, not for use in human, therapeutic or diagnostic procedure.

Background

Potassium channels are present in most mammalian cells, where they participate in a wide range of physiologic responses. The protein encoded by this gene is an integral membrane protein and inward-rectifier type potassium channel, and probably has a role in controlling the excitability of motor neurons.

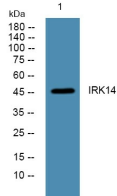
Recommended Dilution

WB: 1: 500 - 1: 2000

ELISA: 1: 5000 - 1: 20000

Not yet tested in other applications.

Images



Western blot analysis of lysates from SW480 cells, primary antibody was diluted at 1:1000, 4°C overnight

Storage

-20°C for 1 year