

IRK15 Polyclonal Antibody

Description

Product type	Primary Antibody
Code	BT-AP10500
Host	Rabbit
Isotype	IgG
Size	20ul, 50ul, 100ul
Immunogen	Synthesized peptide derived from human protein . at AA range: 30-110
Mol wt	N/A
Species reactivity	Human, Rat, Mouse
Clonality	Polyclonal
Recommended application	WB, ELISA
Concentration	1 mg/ml
Full name	ATP-sensitive inward rectifier potassium channel 15
Synonyms	ATP-sensitive inward rectifier potassium channel 15 ;Inward rectifier K ₊ channel Kir1.3;Inward rectifier K ₊ channel Kir4.2;Potassium channel, inwardly rectifying subfamily J member 15

This product is for research use only, not for use in human, therapeutic or diagnostic procedure.

Background

Potassium channels are present in most mammalian cells, where they participate in a wide range of physiologic responses. The protein encoded by this gene is an integral membrane protein and inward-rectifier type potassium channel. The encoded protein has a greater tendency to allow potassium to flow into a cell rather than out of a cell. Eight transcript variants encoding the same protein have been found for this gene.

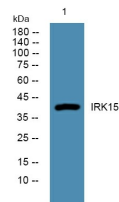
Recommended Dilution

WB: 1: 500 - 1: 2000

ELISA: 1: 5000 - 1: 20000

Not yet tested in other applications.

Images



Western blot analysis of lysates from HCT116 cells, primary antibody was diluted at 1:1000, 4°C overnight

Storage

-20°C for 1 year