

IRP-1(Phospho Ser138) Polyclonal Antibody

Description

Product type	Primary Antibody
Code	BT-AP10503
Host	Rabbit
Isotype	IgG
Size	20ul, 50ul, 100ul
Immunogen	The antiserum was produced against synthesized peptide derived from human IREB1 around the phosphorylation site of Ser138. AA range:106-155
Mol wt	98399
Species reactivity	Human, Mouse, Rat
Clonality	Polyclonal
Recommended application	IHC-p, IF, ICC, ELISA
Concentration	1 mg/ml
Full name	Cytoplasmic aconitate hydratase
Synonyms	Cytoplasmic aconitate hydratase; ACO1; IREB1; Cytoplasmic aconitate hydratase; Aconitase; Citrate hydro-lyase; Ferritin repressor protein; Iron regulatory protein 1; IRP1; Iron-responsive element-binding protein 1; IRE-BP 1

This product is for research use only, not for use in human, therapeutic or diagnostic procedure.

Background

The protein encoded by this gene is a bifunctional, cytosolic protein that functions as an essential enzyme in the TCA cycle and interacts with mRNA to control the levels of iron inside cells. When cellular iron levels are high, this protein binds to a 4Fe-4S cluster and functions as an aconitase. Aconitases are iron-sulfur proteins that function to catalyze the conversion of citrate to isocitrate. When cellular iron levels are low, the protein binds to iron-responsive elements (IREs), which are stem-loop structures found in the 5' UTR of ferritin mRNA, and in the 3' UTR of transferrin receptor mRNA. When the protein binds to IRE, it results in repression of translation of ferritin mRNA, and inhibition of degradation of the otherwise rapidly degraded transferrin receptor mRNA. The encoded protein has been identified as a moonlighting protein based on its ability to perform mechanistically distinct

Recommended Dilution

WB: 1: 500 - 1: 2000

IHC-p: 1: 100 - 1: 300

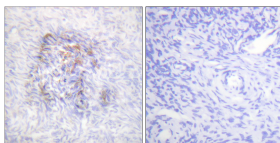
IF: 1: 200 - 1: 1000

ICC: 1: 200 - 1: 1000

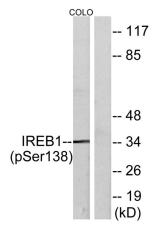
ELISA: 1: 10000

Not yet tested in other applications.

Images



Immunohistochemistry analysis of paraffin-embedded human ovary, using IREB1 (Phospho-Ser138) Antibody. The picture on the right is blocked with the phospho peptide.



Western blot analysis of IREB1 (Phospho-Ser138) Antibody. The lane on the right is blocked with the IREB1 (Phospho-Ser138) peptide.

Storage

-20°C for 1 year

501 Changsheng S Rd, Nanhu Dist, Jiaxing, Zhejiang, China

Tel: 86 21 31007137 | E-mail: save@bt-laboratory.com | www.bt-laboratory.com