

IRS-1(Phospho Ser323) Polyclonal Antibody

Description

Product type	Primary Antibody
Code	BT-AP10510
Host	Rabbit
Isotype	IgG
Size	20ul, 50ul, 100ul
Immunogen	The antiserum was produced against synthesized peptide derived from human IRS-1 around the phosphorylation site of Ser323. AA range:289-338
Mol wt	131591
Species reactivity	Human, Mouse, Rat, Monkey
Clonality	Polyclonal
Recommended application	WB, IHC-p, IF, ICC, ELISA
Concentration	1 mg/ml
Full name	Insulin receptor substrate 1
Synonyms	Insulin receptor substrate 1; IRS1; Insulin receptor substrate 1; IRS-1

This product is for research use only, not for use in human, therapeutic or diagnostic procedure.

Background

This gene encodes a protein which is phosphorylated by insulin receptor tyrosine kinase. Mutations in this gene are associated with type II diabetes and susceptibility to insulin resistance.

Recommended Dilution

WB: 1: 500 - 1: 2000

IHC-p: 1: 100 - 1: 300

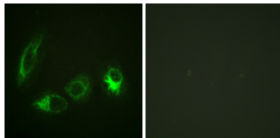
IF: 1: 200 - 1: 1000

ICC: 1: 200 - 1: 1000

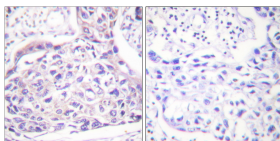
ELISA: 1: 10000

Not yet tested in other applications.

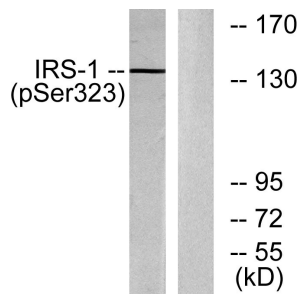
Images



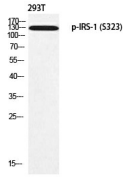
Immunofluorescence analysis of HeLa cells, using IRS-1 (Phospho-Ser323) Antibody. The picture on the right is blocked with the phospho peptide.



Immunohistochemistry analysis of paraffin-embedded human breast carcinoma, using IRS-1 (Phospho-Ser323) Antibody. The picture on the right is blocked with the phospho peptide.



Western blot analysis of 293T using p-IRS-1 (S323) antibody. Antibody was diluted at 1:1000



Western blot analysis of lysates from COS7 cells treated with Serum 20% 15', using IRS-1 (Phospho-Ser323) Antibody. The lane on the right is blocked with the phospho peptide.

Storage

-20°C for 1 year

501 Changsheng S Rd, Nanhu Dist, Jiaxing, Zhejiang, China

Tel: 86 21 31007137 | E-mail: save@bt-laboratory.com | www.bt-laboratory.com