

## HXC5 Rabbit Polyclonal Antibody

### Description

Product type	Primary Antibody
Code	BT-AP10523
Host	Rabbit
Isotype	IgG
Size	100ul, 50ul, 20ul
Immunogen	Synthesized peptide derived from human HXC5
Mol wt	24420
Species reactivity	Human, Mouse
Clonality	Polyclonal
Recommended application	WB
Concentration	1 mg/ml
Full name	HXC5
Synonyms	HXC5

This product is for research use only, not for use in human, therapeutic or diagnostic procedure.

### Background

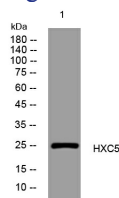
This gene belongs to the homeobox family of genes. The homeobox genes encode a highly conserved family of transcription factors that play an important role in morphogenesis in all multicellular organisms. Mammals possess four similar homeobox gene clusters| HOXA| HOXB| HOXC and HOXD| which are located on different chromosomes and consist of 9 to 11 genes arranged in tandem. This gene| HOXC5| is one of several homeobox HOXC genes located in a cluster on chromosome 12. Three genes| HOXC5| HOXC4 and HOXC6| share a 5' non-coding exon. Transcripts may include the shared exon spliced to the gene-specific exons| or they may include only the gene-specific exons. Two alternatively spliced variants have been described for HOXC5. The transcript variant which includes the shared exon apparently doesn't encode a protein. The protein-coding transcript variant contains gene-specific exons only.

### Recommended Dilution

WB: 1: 500 - 1: 2000

Not yet tested in other applications.

### Images



Western blot analysis of lysates from HpeG2 cells, primary antibody was diluted at 1:1000, 4°C overnight

### Storage

-20°C for 1 year