

HYOU1 Rabbit Polyclonal Antibody

Description

Product type	Primary Antibody
Code	BT-AP10525
Host	Rabbit
Isotype	IgG
Size	100ul, 50ul, 20ul
Immunogen	Synthesized peptide derived from human HYOU1
Mol wt	109890
Species reactivity	Human, Mouse, Rat
Clonality	Polyclonal
Recommended application	WB
Concentration	1 mg/ml
Full name	HYOU1
Synonyms	HYOU1

This product is for research use only, not for use in human, therapeutic or diagnostic procedure.

Background

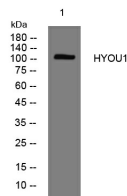
The protein encoded by this gene belongs to the heat shock protein 70 family. This gene uses alternative transcription start sites. A cis-acting segment found in the 5' UTR is involved in stress-dependent induction| resulting in the accumulation of this protein in the endoplasmic reticulum (ER) under hypoxic conditions. The protein encoded by this gene is thought to play an important role in protein folding and secretion in the ER. Since suppression of the protein is associated with accelerated apoptosis| it is also suggested to have an important cytoprotective role in hypoxia-induced cellular perturbation. This protein has been shown to be up-regulated in tumors| especially in breast tumors| and thus it is associated with tumor invasiveness. This gene also has an alternative translation initiation site| resulting in a protein that lacks the N-terminal signal peptide. This signal peptide-lacking protein| which is only 3 amino acids shorter than the mature protein in the ER| is thought to have a housekeeping function in the cytosol. In rat| this protein localizes to both the ER by a carboxy-terminal peptide sequence and to mitochondria by an amino-terminal targeting signal. Alternative splicing results in multiple transcript variants.

Recommended Dilution

WB: 1: 500 - 1: 2000

Not yet tested in other applications.

Images



Western blot analysis of lysates from AD293 cells, primary antibody was diluted at 1:1000, 4°C overnight

Storage

-20°C for 1 year