

ITBP2 Polyclonal Antibody

Description

Product type	Primary Antibody
Code	BT-AP10535
Host	Rabbit
Isotype	IgG
Size	20ul, 50ul, 100ul
Immunogen	Synthesized peptide derived from human protein . at AA range: 10-90
Mol wt	N/A
Species reactivity	Human, Mouse
Clonality	Polyclonal
Recommended application	WB, ELISA
Concentration	1 mg/ml
Full name	Integrin beta-1-binding protein 2
Synonyms	Integrin beta-1-binding protein 2 ;Melusin

This product is for research use only, not for use in human, therapeutic or diagnostic procedure.

Background

The tail domain binds to the cytoplasmic domain of both integrin beta-1a and beta-1d isoforms. The presence of Ca(2+) ions does not prevent binding of a fragment consisting of the second cysteine rich repeat and the tail domain but prevents the binding of the full-length protein. May play a role during maturation and/or organization of muscle cells. Contains 1 CS domain. Contains 2 CHORD domains. subunit: Interacts with beta-1 integrin subunit. This interaction is regulated by divalent cations, and it occurs only in absence of calcium. tissue specificity: Expressed in skeletal and cardiac muscles but not in other tissues.

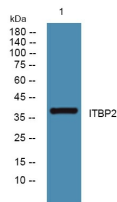
Recommended Dilution

WB: 1: 500 - 1: 2000

ELISA: 1: 5000 - 1: 20000

Not yet tested in other applications.

Images



Western blot analysis of lysates from K562 cells, primary antibody was diluted at 1:1000, 4°C overnight

Storage

-20°C for 1 year