

ITLN1 Polyclonal Antibody

Description

Product type	Primary Antibody
Code	BT-AP10538
Host	Rabbit
Isotype	IgG
Size	20ul, 50ul, 100ul
Immunogen	Synthesized peptide derived from human protein . at AA range: 110-190
Mol wt	N/A
Species reactivity	Human, Rat, Mouse
Clonality	Polyclonal
Recommended application	WB, ELISA
Concentration	1 mg/ml
Full name	Intelectin-1
Synonyms	Intelectin-1 ;ITLN-1;Endothelial lectin HL-1;Galactofuranose-binding lectin;Intestinal lactoferrin receptor;Omentin

This product is for research use only, not for use in human, therapeutic or diagnostic procedure.

Background

developmental stage:Found in fetal small intestine and thymus.,Has no effect on basal glucose uptake but enhances insulin-stimulated glucose uptake in adipocytes. Increases AKT phosphorylation in the absence and presence of insulin. May play a role in the defense system against microorganisms. May specifically recognize carbohydrate chains of pathogens and bacterial components containing galactofuranosyl residues, in a calcium-dependent manner. May be involved in iron metabolism.,mass spectrometry: PubMed:17621593,PTM:N-glycosylated.,Contains 1 fibrinogen C-terminal domain.,subcellular location:Enriched in lipid rafts.,subunit:Homotrimer; disulfide-linked.,tissue specificity:Highly expressed in omental adipose tissue where it is found in stromal vascular cells but not in fat cells but is barely detectable in subcutaneous adipose tissue (at protein level). Highly expressed in the small intestine. Also found in the heart, testis, colon, salivary gland, skeletal muscle, pancreas and thyroid and, to a lesser degree, in the uterus, spleen, prostate, lymph node and thymus.,

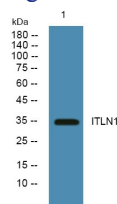
Recommended Dilution

WB: 1: 500 - 1: 2000

ELISA: 1: 5000 - 1: 20000

Not yet tested in other applications.

Images



Western blot analysis of lysates from PC12 cells, primary antibody was diluted at 1:1000, 4°C overnight

Storage

-20°C for 1 year

