

IκB- Epsilon(Phospho Ser22) Polyclonal Antibody

Description

Product type	Primary Antibody
Code	BT-AP10549
Host	Rabbit
Isotype	IgG
Size	20ul, 50ul, 100ul
Immunogen	The antiserum was produced against synthesized peptide derived from human IκappaB-epsilon around the phosphorylation site of Ser22. AA range:131-180
Mol wt	38448
Species reactivity	Human, Mouse, Rat
Clonality	Polyclonal
Recommended application	WB, IHC-p, IF, ICC, ELISA
Concentration	1 mg/ml
Full name	NF-kappa-B inhibitor epsilon
Synonyms	NF-kappa-B inhibitor epsilon; NFKBIE; IKBE; NF-kappa-B inhibitor epsilon; NF-kappa-BIE; I-kappa-B-epsilon; IκB-E; IκB-epsilon; IκappaBepsilon

This product is for research use only, not for use in human, therapeutic or diagnostic procedure.

Background

The protein encoded by this gene binds to components of NF-kappa-B, trapping the complex in the cytoplasm and preventing it from activating genes in the nucleus. Phosphorylation of the encoded protein targets it for destruction by the ubiquitin pathway, which activates NF-kappa-B by making it available to translocate to the nucleus.

Recommended Dilution

WB: 1: 500 - 1: 2000

IHC-p: 1: 100 - 1: 300

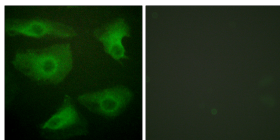
IF: 1: 200 - 1: 1000

ICC: 1: 200 - 1: 1000

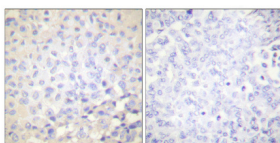
ELISA: 1: 40000

Not yet tested in other applications.

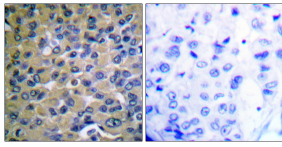
Images



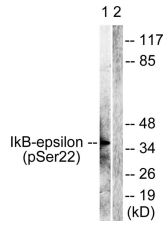
Immunofluorescence analysis of HeLa cells, using IκappaB-epsilon (Phospho-Ser22) Antibody. The picture on the right is blocked with the phospho peptide.



Immunohistochemical analysis of paraffin-embedded Human breast cancer. Antibody was diluted at 1:100(4°C overnight). High-pressure and temperature Tris-EDTA,pH8.0 was used for antigen retrieval. Negative control (right) obtained from antibody was pre-absorbed by immunogen peptide.



Immunohistochemistry analysis of paraffin-embedded human breast carcinoma, using IkappaB-epsilon (Phospho-Ser22) Antibody. The picture on the right is blocked with the phospho peptide.



Western blot analysis of lysates from Jurkat cells treated with TNF-a 20ng/ml 30', using IkappaB-epsilon (Phospho-Ser22) Antibody. The lane on the right is blocked with the phospho peptide.

Storage

-20°C for 1 year

501 Changsheng S Rd, Nanhu Dist, Jiaxing, Zhejiang, China

Tel: 86 21 31007137 | E-mail: save@bt-laboratory.com | www.bt-laboratory.com