

JAML1 Polyclonal Antibody

Description

Product type	Primary Antibody
Code	BT-AP10569
Host	Rabbit
Isotype	IgG
Size	20ul, 50ul, 100ul
Immunogen	Synthesized peptide derived from part region of human protein
Mol wt	N/A
Species reactivity	Human, Rat, Mouse
Clonality	Polyclonal
Recommended application	WB, ELISA
Concentration	1 mg/ml
Full name	Junctional adhesion molecule-like
Synonyms	Junctional adhesion molecule-like ;Adhesion molecule interacting with CXADR antigen 1;Dendritic cell-specific protein CREA7-1

This product is for research use only, not for use in human, therapeutic or diagnostic procedure.

Background

The Ig-like V-type domain 2 mediates interaction with CXADR. May function in transmigration of leukocytes through epithelial and endothelial tissues. Expressed at the plasma membrane of polymorphonuclear leukocytes, it mediates adhesive interactions with CXADR, a protein of the junctional complex of epithelial cells. Enhances myeloid leukemia cell adhesion to endothelial cells. Induction: Up-regulated upon retinoic acid, Me2SO and PMA treatment in differentiating myeloid leukemia cells. Belongs to the immunoglobulin superfamily. Contains 2 Ig-like V-type (immunoglobulin-like) domains. Subcellular location: Localized at the plasma membrane in areas of cell-cell contacts and at the cell surface of PMN. Subunit: Interacts with CXADR. Tissue specificity: Expression is restricted to the hematopoietic tissues with the exception of liver. Expressed in fetal liver, spleen and thymus.

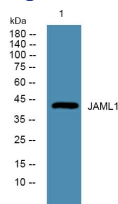
Recommended Dilution

WB: 1: 500 - 1: 2000

ELISA: 1: 5000 - 1: 20000

Not yet tested in other applications.

Images



Western blot analysis of lysates from U2OS cells, primary antibody was diluted at 1:1000, 4°C overnight

Storage

-20°C for 1 year