

JNK3 Rabbit Polyclonal Antibody

Description

Product type	Primary Antibody
Code	BT-AP10588
Host	Rabbit
Isotype	IgG
Size	20ul, 50ul, 100ul
Immunogen	Recombinant Protein of JNK3
Mol wt	N/A
Species reactivity	Human, Mouse, Rat
Clonality	Polyclonal
Recommended application	IHC-p, IF
Concentration	1 mg/ml
Full name	Mitogen-activated protein kinase 10
Synonyms	Mitogen-activated protein kinase 10 ;MAP kinase 10;MAPK 10;EC 2.7.11.24;MAP kinase p49 3F12;Stress-activated protein kinase 1b;SAPK1b;Stress-activated protein kinase JNK3;c-Jun N-termina; Mitogen-activated protein kinase 10; MAP kinase 10; MAPK 10; EC 2.7.11.24; MAP kinase p49 3F12; Stress-activated protein kinase 1b; SAPK1b; Stress-activated protein kinase JNK3; c-Jun N-terminal kinase 3

This product is for research use only, not for use in human, therapeutic or diagnostic procedure.

Background

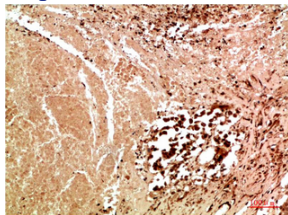
The protein encoded by this gene is a member of the MAP kinase family. MAP kinases act as integration points for multiple biochemical signals and are involved in a wide variety of cellular processes, such as proliferation, differentiation, transcription regulation and development. This kinase is specifically expressed in a subset of neurons in the nervous system and is activated by threonine and tyrosine phosphorylation. Targeted deletion of this gene in mice suggests that it may have a role in stress-induced neuronal apoptosis. Alternatively spliced transcript variants encoding different isoforms have been described for this gene. A recent study provided evidence for translational readthrough in this gene and expression of an additional C-terminally extended isoform via the use of an alternative in-frame translation termination codon.

Recommended Dilution

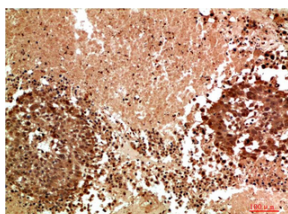
IHC-p: 1: 50 - 1: 300

Not yet tested in other applications.

Images



Immunohistochemical analysis of paraffin-embedded Human Lung Carcinoma Tissue using JNK3 Rabbit pAb diluted at 1:200



Immunohistochemical analysis of paraffin-embedded Human Lung Carcinoma Tissue using JNK3 Rabbit pAb diluted at 1:200

Storage

-20°C for 1 year

501 Changsheng S Rd, Nanhu Dist, Jiaxing, Zhejiang, China

Tel: 86 21 31007137 | E-mail: save@bt-laboratory.com | www.bt-laboratory.com