

IMPA1 Rabbit Polyclonal Antibody

Description

Product type	Primary Antibody
Code	BT-AP10613
Host	Rabbit
Isotype	IgG
Size	100ul, 50ul, 20ul
Immunogen	Synthesized peptide derived from human IMPA1
Mol wt	30470
Species reactivity	Human, Mouse, Rat
Clonality	Polyclonal
Recommended application	WB
Concentration	1 mg/ml
Full name	IMPA1
Synonyms	IMPA1

This product is for research use only, not for use in human, therapeutic or diagnostic procedure.

Background

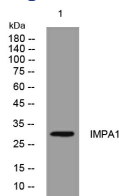
This gene encodes an enzyme that dephosphorylates myo-inositol monophosphate to generate free myo-inositol| a precursor of phosphatidylinositol| and is therefore an important modulator of intracellular signal transduction via the production of the second messengers myo-inositol 1|4|5-trisphosphate and diacylglycerol. This enzyme can also use myo-inositol-1|3-diphosphate| myo-inositol-1|4-diphosphate| scyllo-inositol-phosphate| glucose-1-phosphate| glucose-6-phosphate| fructose-1-phosphate| beta-glycerophosphate| and 2'-AMP as substrates. This enzyme shows magnesium-dependent phosphatase activity and is inhibited by therapeutic concentrations of lithium. Inhibition of inositol monophosphate hydrolysis and subsequent depletion of inositol for phosphatidylinositol synthesis may explain the anti-manic and anti-depressive effects of lithium administered to treat bipolar disorder. Alternative splicing results in multiple transcript variants encoding distinct isoforms. A pseudogene of this gene is also present on chromosome 8q21.13.

Recommended Dilution

WB: 1: 500 - 1: 2000

Not yet tested in other applications.

Images



Western blot analysis of lysates from MDA-MB cells, primary antibody was diluted at 1:1000, 4°C overnight

Storage

-20°C for 1 year