

KBRS1 Polyclonal Antibody

Description

Product type	Primary Antibody
Code	BT-AP10620
Host	Rabbit
Isotype	IgG
Size	20ul, 50ul, 100ul
Immunogen	Synthesized peptide derived from human protein . at AA range: 50-130
Mol wt	N/A
Species reactivity	Human, Mouse
Clonality	Polyclonal
Recommended application	WB, ELISA
Concentration	1 mg/ml
Full name	NF-kappa-B inhibitor-interacting Ras-like protein 1
Synonyms	NF-kappa-B inhibitor-interacting Ras-like protein 1 ;I-kappa-B-interacting Ras-like protein 1;Kappa B-Ras protein 1;KappaB-Ras1

This product is for research use only, not for use in human, therapeutic or diagnostic procedure.

Background

In contrast to other members of the Ras family, the members of the KappaB-Ras subfamily do not contain the conserved Gly and Gln residues in positions 13 and 65, which are replaced by Leu residues, and are therefore similar to the constitutively active forms of oncogenic forms of Ras. This suggests that members of this family are clearly different from other small GTPases proteins. Atypical Ras-like protein that acts as a potent regulator of NF-kappa-B activity by preventing the degradation of NF-kappa-B inhibitor beta (NFKBIB) by most signals, explaining why NFKBIB is more resistant to degradation. May act by blocking phosphorylation of NFKBIB and mediating cytoplasmic retention of p65/RELA NF-kappa-B subunit. It is unclear whether it acts as a GTPase. Both GTP- and GDP-bound forms block phosphorylation of NFKBIB. Belongs to the small GTPase superfamily. Ras family. KappaB-Ras subfamily. subunit: Interacts with both NF-kappa-B inhibitor alpha (NFKBIA) and beta (NFKBIB) in vitro. However, it probably only interacts with NFKBIB in vivo. Forms a complex with NFKBIB and NF-kappa-B heterodimer (p50/NFKB1 and p65/RELA). Also interacts with c-Rel (REL). tissue specificity: Widely expressed.

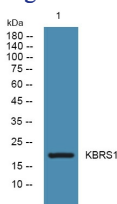
Recommended Dilution

WB: 1: 500 - 1: 2000

ELISA: 1: 5000 - 1: 20000

Not yet tested in other applications.

Images



Western blot analysis of lysates from HCT116 cells, primary antibody was diluted at 1:1000, 4°C overnight

Storage

-20°C for 1 year

501 Changsheng S Rd, Nanhu Dist, Jiaxing, Zhejiang, China

Tel: 86 21 31007137 | E-mail: save@bt-laboratory.com | www.bt-laboratory.com