

KCMB1 Polyclonal Antibody

Description

Product type	Primary Antibody
Code	BT-AP10628
Host	Rabbit
Isotype	IgG
Size	20ul, 50ul, 100ul
Immunogen	Synthesized peptide derived from part region of human protein
Mol wt	N/A
Species reactivity	Human, Mouse, Rat
Clonality	Polyclonal
Recommended application	WB, ELISA
Concentration	1 mg/ml
Full name	Calcium-activated potassium channel subunit beta-1
Synonyms	Calcium-activated potassium channel subunit beta-1 ;BK channel subunit beta-1;BKbeta;BKbeta1;Hbeta1;Calcium-activated potassium channel, subfamily M subunit beta-1;Calcium-activated potassiu

This product is for research use only, not for use in human, therapeutic or diagnostic procedure.

Background

MaxiK channels are large conductance, voltage and calcium-sensitive potassium channels which are fundamental to the control of smooth muscle tone and neuronal excitability. MaxiK channels can be formed by 2 subunits: the pore-forming alpha subunit and the product of this gene, the modulatory beta subunit. Intracellular calcium regulates the physical association between the alpha and beta subunits.

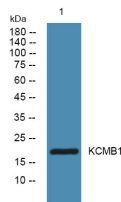
Recommended Dilution

WB: 1: 500 - 1: 2000

ELISA: 1: 5000 - 1: 20000

Not yet tested in other applications.

Images



Western blot analysis of lysates from PC12 cells, primary antibody was diluted at 1:1000, 4°C overnight

Storage

-20°C for 1 year