

KCNK4 (TRAAK) Polyclonal Antibody

Description

Product type	Primary Antibody
Code	BT-AP10644
Host	Rabbit
Isotype	IgG
Size	20ul, 50ul, 100ul
Immunogen	Synthetic Peptide of KCNK4 (TRAAK)
Mol wt	N/A
Species reactivity	Human, Rat, Mouse
Clonality	Polyclonal
Recommended application	IHC-p, IF
Concentration	1 mg/ml
Full name	Potassium channel subfamily K member 4
Synonyms	Potassium channel subfamily K member 4 ; TWIK-related arachidonic acid-stimulated potassium channel protein; TRAAK; Two pore potassium channel KT4.1; Two pore K ₊ channel KT4.1; KCNK4; TRAAK; Potassium channel subfamily K member 4; TWIK-related arachidonic acid-stimulated potassium channel protein; TRAAK; Two pore potassium channel KT4.1; Two pore K ₊ channel KT4.1

This product is for research use only, not for use in human, therapeutic or diagnostic procedure.

Background

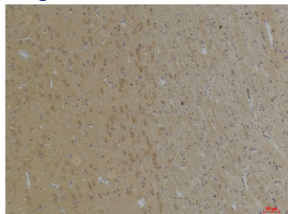
This gene encodes a member of the TWIK-related arachidonic acid-stimulated two pore potassium channel subfamily. The encoded protein homodimerizes and functions as an outwardly rectifying channel. This channel is regulated by polyunsaturated fatty acids, temperature and mechanical deformation of the lipid membrane. This protein is expressed primarily in neural tissues and may be involved in regulating the noxious input threshold in dorsal root ganglia neurons. Alternate splicing results in multiple transcript variants. Naturally occurring read-through transcripts also exist between this gene and the downstream testis expressed 40 (TEX40) gene, as represented in GeneID: 106780802.

Recommended Dilution

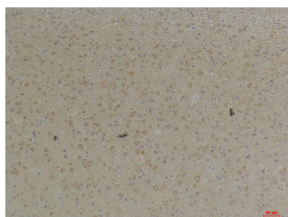
IHC: 1: 100 - 1: 200

Not yet tested in other applications.

Images



Immunohistochemical analysis of paraffin-embedded Rat BrainTissue using KCNK4 (TRAAK) Rabbit pAb diluted at 1:200.



Immunohistochemical analysis of paraffin-embedded Mouse BrainTissue using KCNK4 (TRAAK) Rabbit pAb diluted at 1:200.

Storage

-20°C for 1 year

501 Changsheng S Rd, Nanhu Dist, Jiaxing, Zhejiang, China

Tel: 86 21 31007137 | E-mail: save@bt-laboratory.com | www.bt-laboratory.com