

KCNKG Polyclonal Antibody

Description

Product type	Primary Antibody
Code	BT-AP10647
Host	Rabbit
Isotype	IgG
Size	20ul, 50ul, 100ul
Immunogen	Synthesized peptide derived from human protein . at AA range: 230-310
Mol wt	N/A
Species reactivity	Human, Rat, Mouse
Clonality	Polyclonal
Recommended application	WB, ELISA
Concentration	1 mg/ml
Full name	Potassium channel subfamily K member 16
Synonyms	Potassium channel subfamily K member 16 ;2P domain potassium channel Talk-1;TWIK-related alkaline pH-activated K _i + channel 1;TALK-1

This product is for research use only, not for use in human, therapeutic or diagnostic procedure.

Background

The protein encoded by this gene belongs to the family of potassium channel proteins containing two pore-forming P domains. This channel is an open rectifier which primarily passes outward current under physiological K⁺ concentrations. This gene is expressed predominantly in the pancreas and is activated at alkaline pH. Several alternatively spliced transcript variants encoding different isoforms have been identified for this gene.

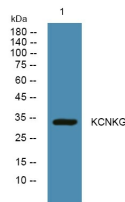
Recommended Dilution

WB: 1: 500 - 1: 2000

ELISA: 1: 5000 - 1: 20000

Not yet tested in other applications.

Images



Western blot analysis of lysates from DU145 cells, primary antibody was diluted at 1:1000, 4°C overnight

Storage

-20°C for 1 year