

KCNN4 (SK4) Polyclonal Antibody

Description

Product type	Primary Antibody
Code	BT-AP10651
Host	Rabbit
Isotype	IgG
Size	20ul, 50ul, 100ul
Immunogen	Synthetic Peptide of KCNN4 (SK4)
Mol wt	N/A
Species reactivity	Human, Rat, Mouse
Clonality	Polyclonal
Recommended application	WB, IHC-p, IF
Concentration	1 mg/ml
Full name	Intermediate conductance calcium-activated potassium channel protein 4
Synonyms	Intermediate conductance calcium-activated potassium channel protein 4 ;SK4;SKCa4;SKCa4;IKCa1;IK1;KCa3.1;KCa4;Putative Gardos channel; KCNN4; IK1; IKCA1; KCA4; SK4; Intermediate conductance calcium-activated potassium channel protein 4; SK4; SKCa 4; SKCa4; IKCa1; IK1; KCa3.1; KCa4; Putative Gardos channel

This product is for research use only, not for use in human, therapeutic or diagnostic procedure.

Background

The protein encoded by this gene is part of a potentially heterotetrameric voltage-independent potassium channel that is activated by intracellular calcium. Activation is followed by membrane hyperpolarization, which promotes calcium influx. The encoded protein may be part of the predominant calcium-activated potassium channel in T-lymphocytes. This gene is similar to other KCNN family potassium channel genes, but it differs enough to possibly be considered as part of a new subfamily.

Recommended Dilution

WB: 1: 1000 - 1: 2000

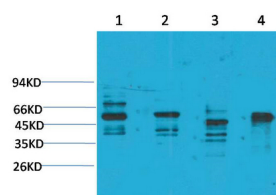
IHC: 1: 50 - 100

Not yet tested in other applications.

Images



Immunohistochemical analysis of paraffin-embedded Rat Brain Tissue using KCNN4(SK4) Rabbit pAb diluted at 1:200.



Western blot analysis of 1) Rat Brain Tissue, 2) Mouse Brain Tissue, 3) K562, 4) HepG2 with KCNN4(SK4) Rabbit pAb diluted at 1:2,000.

Storage

-20°C for 1 year

501 Changsheng S Rd, Nanhu Dist, Jiaxing, Zhejiang, China

Tel: 86 21 31007137 | E-mail: save@bt-laboratory.com | www.bt-laboratory.com