

Kir4.1 Polyclonal Antibody

Description

Product type	Primary Antibody
Code	BT-AP10701
Host	Rabbit
Isotype	IgG
Size	20ul, 50ul, 100ul
Immunogen	Synthetic Peptide of Kir4.1
Mol wt	N/A
Species reactivity	Human, Rat, Mouse
Clonality	Polyclonal
Recommended application	IHC-p, IF
Concentration	1 mg/ml
Full name	ATP-sensitive inward rectifier potassium channel 10
Synonyms	ATP-sensitive inward rectifier potassium channel 10 ;ATP-dependent inwardly rectifying potassium channel Kir4.1;Inward rectifier K; ⁺ channel Kir1.2;Potassium channel, inwardly rectifying subfamil; ATP-sensitive inward rectifier potassium channel 10; ATP-dependent inwardly rectifying potassium channel Kir4.1; Inward rectifier K; ⁺ channel Kir1.2; Potassium channel, inwardly rectifying subfamily J member 10

This product is for research use only, not for use in human, therapeutic or diagnostic procedure.

Background

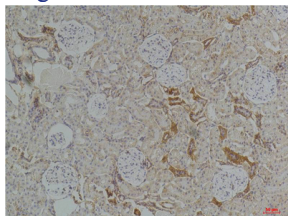
This gene encodes a member of the inward rectifier-type potassium channel family, characterized by having a greater tendency to allow potassium to flow into, rather than out of, a cell. The encoded protein may form a heterodimer with another potassium channel protein and may be responsible for the potassium buffering action of glial cells in the brain. Mutations in this gene have been associated with seizure susceptibility of common idiopathic generalized epilepsy syndromes.

Recommended Dilution

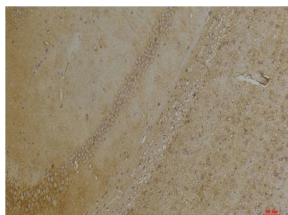
IHC: 1: 100 - 1: 200

Not yet tested in other applications.

Images



Immunohistochemical analysis of paraffin-embedded Rat Kidney Tissue using Kir4.1 Rabbit pAb diluted at 1:200.



Immunohistochemical analysis of paraffin-embedded Mouse Brain Tissue using Kir4.1 Rabbit pAb diluted at 1:200.

Storage

-20°C for 1 year

501 Changsheng S Rd, Nanhu Dist, Jiaxing, Zhejiang, China

Tel: 86 21 31007137 | E-mail: save@bt-laboratory.com | www.bt-laboratory.com