

ITIH6 Rabbit Polyclonal Antibody

Description

Product type	Primary Antibody
Code	BT-AP10708
Host	Rabbit
Isotype	IgG
Size	100ul, 50ul, 20ul
Immunogen	Synthesized peptide derived from human ITIH6
Mol wt	144430
Species reactivity	Human, Rat, Mouse
Clonality	Polyclonal
Recommended application	WB
Concentration	1 mg/ml
Full name	ITIH6
Synonyms	ITIH6

This product is for research use only, not for use in human, therapeutic or diagnostic procedure.

Background

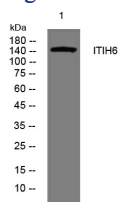
The protein encoded by this gene belongs to the interalpha trypsin inhibitor heavy chain (ITIH) family. Interalpha trypsin inhibitor (ITI) is composed of two heavy chains (containing VWA domain) and one light chain. The light chain confers the protease-inhibitor function| while the heavy chains are involved in mediating protein-protein interactions with the components of the extracellular matrix.

Recommended Dilution

WB: 1: 500 - 1: 2000

Not yet tested in other applications.

Images



Western blot analysis of lysates from U2OS cells, primary antibody was diluted at 1:1000, 4°C overnight

Storage

-20°C for 1 year

501 Changsheng S Rd, Nanhu Dist, Jiaxing, Zhejiang, China

Tel: 86 21 31007137 | E-mail: save@bt-laboratory.com | www.bt-laboratory.com