

## KKCC1 Polyclonal Antibody

### Description

Product type	Primary Antibody
Code	BT-AP10711
Host	Rabbit
Isotype	IgG
Size	20ul, 50ul, 100ul
Immunogen	Synthesized peptide derived from human protein . at AA range: 400-480
Mol wt	N/A
Species reactivity	Human, Mouse, Rat
Clonality	Polyclonal
Recommended application	WB, ELISA
Concentration	1 mg/ml
Full name	Calcium/calmodulin-dependent protein kinase kinase 1
Synonyms	Calcium/calmodulin-dependent protein kinase kinase 1 ;CaM-KK 1;CaM-kinase kinase 1;CaMKK 1;EC 2.7.11.17;CaM-kinase IV kinase;Calcium/calmodulin-dependent protein kinase kinase alpha;CaM-KK

**This product is for research use only, not for use in human, therapeutic or diagnostic procedure.**

### Background

The product of this gene belongs to the Serine/Threonine protein kinase family, and to the Ca(2+)/calmodulin-dependent protein kinase subfamily. This protein plays a role in the calcium/calmodulin-dependent (CaM) kinase cascade. Three transcript variants encoding two distinct isoforms have been identified for this gene.

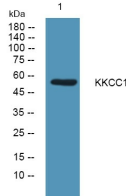
### Recommended Dilution

WB: 1: 500 - 1: 2000

ELISA: 1: 5000 - 1: 20000

Not yet tested in other applications.

### Images



Western blot analysis of lysates from DU145 cells, primary antibody was diluted at 1:1000, 4°C overnight

### Storage

-20°C for 1 year