

KLF14 Polyclonal Antibody

Description

| | |
|--------------------------------|---|
| Product type | Primary Antibody |
| Code | BT-AP10720 |
| Host | Rabbit |
| Isotype | IgG |
| Size | 20ul, 50ul, 100ul |
| Immunogen | Synthesized peptide derived from part region of human protein |
| Mol wt | N/A |
| Species reactivity | Human, Mouse |
| Clonality | Polyclonal |
| Recommended application | WB, ELISA |
| Concentration | 1 mg/ml |
| Full name | Krueppel-like factor 14 |
| Synonyms | Krueppel-like factor 14 ;Basic transcription element-binding protein 5;BTE-binding protein 5;Transcription factor BTEB5 |

This product is for research use only, not for use in human, therapeutic or diagnostic procedure.

Background

This intronless gene encodes a member of the Kruppel-like family of transcription factors. The encoded protein functions as a transcriptional co-repressor, and is induced by transforming growth factor-beta (TGF-beta) to repress TGF-beta receptor II gene expression. This gene exhibits imprinted expression from the maternal allele in embryonic and extra-embryonic tissues.

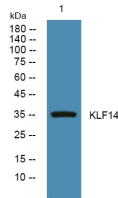
Recommended Dilution

WB: 1: 500 - 1: 2000

ELISA: 1: 5000 - 1: 20000

Not yet tested in other applications.

Images



Western blot analysis of lysates from U2OS cells, primary antibody was diluted at 1:1000, 4°C overnight

Storage

-20°C for 1 year