

KLF16 Polyclonal Antibody

Description

Product type	Primary Antibody
Code	BT-AP10721
Host	Rabbit
Isotype	IgG
Size	20ul, 50ul, 100ul
Immunogen	Synthesized peptide derived from human protein . at AA range: 10-90
Mol wt	N/A
Species reactivity	Human, Mouse
Clonality	Polyclonal
Recommended application	WB, ELISA
Concentration	1 mg/ml
Full name	Krueppel-like factor 16
Synonyms	Krueppel-like factor 16 ;Basic transcription element-binding protein 4;BTE-binding protein 4;Novel Sp1-like zinc finger transcription factor 2;Transcription factor BTEB4;Transcription factor N

This product is for research use only, not for use in human, therapeutic or diagnostic procedure.

Background

Transcription factor that binds GC and GT boxes and displaces Sp1 and Sp3 from these sequences. Modulates dopaminergic transmission in the brain.,Belongs to the Sp1 C2H2-type zinc-finger protein family.,Contains 3 C2H2-type zinc fingers.,

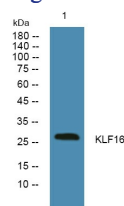
Recommended Dilution

WB: 1: 500 - 1: 2000

ELISA: 1: 5000 - 1: 20000

Not yet tested in other applications.

Images



Western blot analysis of lysates from SH-SY5Y cells, primary antibody was diluted at 1:1000, 4°C overnight

Storage

-20°C for 1 year