

I κ B alpha(Phospho-Ser32) Rabbit Polyclonal Antibody

Description

Product type	Primary Antibody
Code	BT-AP10723
Host	Rabbit
Isotype	IgG
Size	100ul, 50ul, 20ul
Immunogen	Synthesized phosho peptide around human I κ B α (Ser32)
Mol wt	N/A
Species reactivity	Human, Mouse, Rat
Clonality	Polyclonal
Recommended application	WB
Concentration	1 mg/ml
Full name	I κ Balpha
Synonyms	I κ B α ;Ser32 ; NF-kappa-B inhibitor alpha; I-kappa-B-alpha; I κ B-alpha; IkappaBalpa; Major histocompatibility complex enhancer-binding protein MAD3

This product is for research use only, not for use in human, therapeutic or diagnostic procedure.

Background

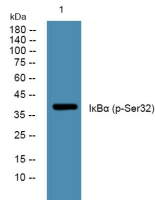
This gene encodes a member of the NF-kappa-B inhibitor family| which contain multiple ankrin repeat domains. The encoded protein interacts with REL dimers to inhibit NF-kappa-B/REL complexes which are involved in inflammatory responses. The encoded protein moves between the cytoplasm and the nucleus via a nuclear localization signal and CRM1-mediated nuclear export. Mutations in this gene have been found in ectodermal dysplasia anhidrotic with T-cell immunodeficiency autosomal dominant disease.

Recommended Dilution

WB: 1: 1000 - 1: 2000

Not yet tested in other applications.

Images



Western blot analysis of lysates from A431 cells, primary antibody was diluted at 1:1000, 4°C overnight

Storage

-20°C for 1 year