

KLOT Polyclonal Antibody

Description

Product type	Primary Antibody
Code	BT-AP10732
Host	Rabbit
Isotype	IgG
Size	20ul, 50ul, 100ul
Immunogen	Synthesized peptide derived from part region of human protein
Mol wt	N/A
Species reactivity	Human, Mouse, Rat
Clonality	Polyclonal
Recommended application	WB, ELISA
Concentration	1 mg/ml
Full name	Klotho
Synonyms	Klotho ;EC 3.2.1.31 [Cleaved into: Klotho peptide]

This product is for research use only, not for use in human, therapeutic or diagnostic procedure.

Background

This gene encodes a type-I membrane protein that is related to beta-glucosidases. Reduced production of this protein has been observed in patients with chronic renal failure (CRF), and this may be one of the factors underlying the degenerative processes (e.g., arteriosclerosis, osteoporosis, and skin atrophy) seen in CRF. Also, mutations within this protein have been associated with ageing and bone loss.

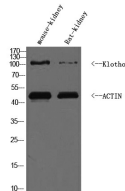
Recommended Dilution

WB: 1: 500 - 1: 2000

ELISA: 1: 5000 - 1: 20000

Not yet tested in other applications.

Images



Western Blot analysis of mouse kidney, rat kidney, HuvEc cell lysis. Primary Antibody was diluted at 1:1000.

Secondary antibody was diluted at 1:10000

Storage

-20°C for 1 year