

KLRF1 Polyclonal Antibody

Description

Product type	Primary Antibody
Code	BT-AP10734
Host	Rabbit
Isotype	IgG
Size	20ul, 50ul, 100ul
Immunogen	Synthesized peptide derived from part region of human protein
Mol wt	N/A
Species reactivity	Human, Rat, Mouse
Clonality	Polyclonal
Recommended application	WB, ELISA
Concentration	1 mg/ml
Full name	Killer cell lectin-like receptor subfamily F member 1
Synonyms	Killer cell lectin-like receptor subfamily F member 1 ;Lectin-like receptor F1;Activating coreceptor NKp80;C-type lectin domain family 5 member C

This product is for research use only, not for use in human, therapeutic or diagnostic procedure.

Background

KLRF1, an activating homodimeric C-type lectin-like receptor (CTLR), is expressed on nearly all natural killer (NK) cells and stimulates their cytotoxicity and cytokine release (Kuttruff et al., 2009)

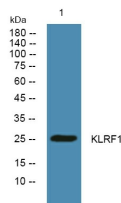
Recommended Dilution

WB: 1: 500 - 1: 2000

ELISA: 1: 5000 - 1: 20000

Not yet tested in other applications.

Images



Western blot analysis of lysates from U2OS cells, primary antibody was diluted at 1:1000, 4°C overnight

Storage

-20°C for 1 year