

## Ku-70 (Acetyl Lys317) Polyclonal Antibody

### Description

<b>Product type</b>	Primary Antibody
<b>Code</b>	BT-AP10766
<b>Host</b>	Rabbit
<b>Isotype</b>	IgG
<b>Size</b>	20ul, 50ul, 100ul
<b>Immunogen</b>	Synthetic Acetyl peptide from human protein at AA range: 317
<b>Mol wt</b>	N/A
<b>Species reactivity</b>	Human, Rat, Mouse
<b>Clonality</b>	Polyclonal
<b>Recommended application</b>	WB, ELISA
<b>Concentration</b>	1 mg/ml
<b>Full name</b>	X-ray repair cross-complementing protein 6
<b>Synonyms</b>	X-ray repair cross-complementing protein 6 ;EC 3.6.4.-;EC 4.2.99.-;5'-deoxyribose-5-phosphate lyase Ku70;5'-dRP lyase Ku70;70 kDa subunit of Ku antigen;ATP-dependent DNA helicase 2 subunit 1; X-ray repair cross-complementing protein 6; EC 3.6.4.-; EC 4.2.99.-; 5'-deoxyribose-5-phosphate lyase Ku70; 5'-dRP lyase Ku70; 70 kDa subunit of Ku antigen; ATP-dependent DNA helicase 2 subunit 1; ATP-dependent DNA helicase II 70 kDa subunit; CTC box-binding factor 75 kDa subunit; CTC75; CTCBF; DNA repair protein XRCC6; Lupus Ku autoantigen protein p70; Ku70; Thyroid-lupus autoantigen; TLAA; X-ray repair complementing defective repair in Chinese hamster cells 6

**This product is for research use only, not for use in human, therapeutic or diagnostic procedure.**

### Background

The p70/p80 autoantigen is a nuclear complex consisting of two subunits with molecular masses of approximately 70 and 80 kDa. The complex functions as a single-stranded DNA-dependent ATP-dependent helicase. The complex may be involved in the repair of nonhomologous DNA ends such as that required for double-strand break repair, transposition, and V(D)J recombination. High levels of autoantibodies to p70 and p80 have been found in some patients with systemic lupus erythematosus.

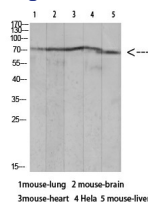
### Recommended Dilution

WB: 1: 500 - 1: 2000

ELISA: 1: 10000 - 1: 20000

Not yet tested in other applications.

### Images



Western blot analysis of mouse-lung lysate, antibody was diluted at 1000. Secondary antibody was diluted at 1:20000

## Storage

-20°C for 1 year

501 Changsheng S Rd, Nanhu Dist, Jiaxing, Zhejiang, China

Tel: 86 21 31007137 | E-mail: [save@bt-laboratory.com](mailto:save@bt-laboratory.com) | [www.bt-laboratory.com](http://www.bt-laboratory.com)