

K2C75 Rabbit Polyclonal Antibody

Description

Product type	Primary Antibody
Code	BT-AP10780
Host	Rabbit
Isotype	IgG
Size	100ul, 50ul, 20ul
Immunogen	Synthesized peptide derived from human K2C75
Mol wt	60610
Species reactivity	Human, Mouse, Rat
Clonality	Polyclonal
Recommended application	WB
Concentration	1 mg/ml
Full name	K2C75
Synonyms	K2C75

This product is for research use only, not for use in human, therapeutic or diagnostic procedure.

Background

This gene is a member of the type II keratin family clustered on the long arm of chromosome 12. Type I and type II keratins heteropolymerize to form intermediate-sized filaments in the cytoplasm of epithelial cells. This gene is expressed in the companion layer| upper germinative matrix region of the hair follicle| and medulla of the hair shaft. The encoded protein plays an essential role in hair and nail formation.

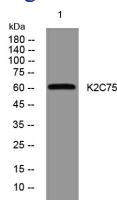
Variations in this gene have been associated with the hair disorders pseudofolliculitis barbae (PFB) and loose anagen hair syndrome (LAHS).

Recommended Dilution

WB: 1: 500 - 1: 2000

Not yet tested in other applications.

Images



Western blot analysis of lysates from HuvEc cells, primary antibody was diluted at 1:1000, 4°C overnight

Storage

-20°C for 1 year