

Kv1.8 Polyclonal Antibody

Description

Product type	Primary Antibody
Code	BT-AP10790
Host	Rabbit
Isotype	IgG
Size	20ul, 50ul, 100ul
Immunogen	Synthetic Peptide of Kv1.8
Mol wt	N/A
Species reactivity	Human, Rat, Mouse
Clonality	Polyclonal
Recommended application	WB, IHC-p, IF
Concentration	1 mg/ml
Full name	Potassium voltage-gated channel subfamily A member 10
Synonyms	Potassium voltage-gated channel subfamily A member 10 ;Voltage-gated potassium channel subunit Kv1.8; Potassium voltage-gated channel subfamily A member 10; Voltage-gated potassium channel subunit Kv1.8

This product is for research use only, not for use in human, therapeutic or diagnostic procedure.

Background

Potassium channels represent the most complex class of voltage-gated ion channels from both functional and structural standpoints. Their diverse functions include regulating neurotransmitter release, heart rate, insulin secretion, neuronal excitability, epithelial electrolyte transport, smooth muscle contraction, and cell volume. Four sequence-related potassium channel genes - shaker, shaw, shab, and shal - have been identified in *Drosophila*, and each has been shown to have human homolog(s). This gene encodes a member of the potassium channel, voltage-gated, shaker-related subfamily. This member contains six membrane-spanning domains with a shaker-type repeat in the fourth segment. It is specifically regulated by cGMP and postulated to mediate the effects of substances that increase intracellular cGMP. This gene is intronless, and the gene is clustered with genes KCNA

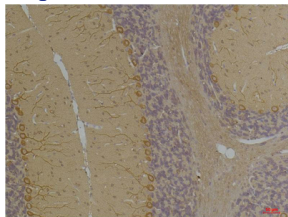
Recommended Dilution

WB: 1: 1000 - 1: 2000

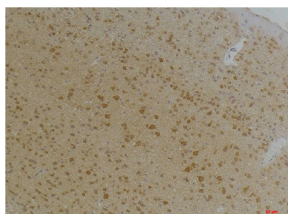
IHC: 1: 100 - 1: 200

Not yet tested in other applications.

Images

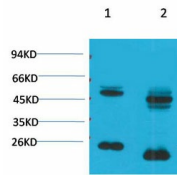


Immunohistochemical analysis of paraffin-embedded Rat Brain Tissue using Kv1.8 Rabbit pAb diluted at 1:200.



Immunohistochemical analysis of paraffin-embedded Mouse Brain Tissue using Kv1.8 Rabbit pAb diluted at 1:200.

Western blot analysis of 1) Rat Brain Tissue, 2) Mouse Brain Tissue with KV1.8 Rabbit pAb diluted at 1:2,000.



Storage

-20°C for 1 year

501 Changsheng S Rd, Nanhu Dist, Jiaxing, Zhejiang, China

Tel: 86 21 31007137 | E-mail: save@bt-laboratory.com | www.bt-laboratory.com