

Kv10.2 Polyclonal Antibody

Description

Product type	Primary Antibody
Code	BT-AP10792
Host	Rabbit
Isotype	IgG
Size	20ul, 50ul, 100ul
Immunogen	Synthetic Peptide of Kv10.2
Mol wt	N/A
Species reactivity	Human, Rat, Mouse
Clonality	Polyclonal
Recommended application	WB, IHC-p, IF
Concentration	1 mg/ml
Full name	Potassium voltage-gated channel subfamily H member 5
Synonyms	Potassium voltage-gated channel subfamily H member 5 ;Ether-a-go-go potassium channel 2;hEAG2;Voltage-gated potassium channel subunit Kv10.2; Potassium voltage-gated channel subfamily H member 5; Ether-a-go-go potassium channel 2; hEAG2; Voltage-gated potassium channel subunit Kv10.2

This product is for research use only, not for use in human, therapeutic or diagnostic procedure.

Background

This gene encodes a member of voltage-gated potassium channels. Members of this family have diverse functions, including regulating neurotransmitter and hormone release, cardiac function, and cell volume. This protein is an outward-rectifying, noninactivating channel. Alternative splicing results in multiple transcript variants.

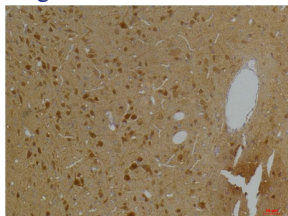
Recommended Dilution

WB: 1: 1000 - 1: 2000

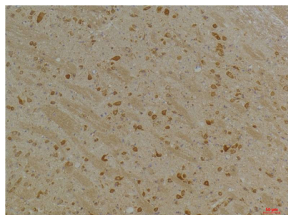
IHC: 1: 100 - 1: 200

Not yet tested in other applications.

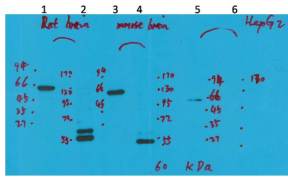
Images



Immunohistochemical analysis of paraffin-embedded Rat Brain Tissue using Kv10.2 Rabbit pAb diluted at 1:200.



Immunohistochemical analysis of paraffin-embedded Mouse Brain Tissue using Kv10.2 Rabbit pAb diluted at 1:200.



Western blot analysis of 1) Rat Brain Tissue-Low Molecular Protein Marker, 2)Rat Brain Tissue-High Molecular Protein Marker, 3) Mouse Brain Tissue-Low Molecular Protein Marker, 4) Mouse Brain Tissue- High Molecular Protein Marker, 5) HepG2-Low Molecular P

Storage

-20°C for 1 year

501 Changsheng S Rd, Nanhu Dist, Jiaxing, Zhejiang, China

Tel: 86 21 31007137 | E-mail: save@bt-laboratory.com | www.bt-laboratory.com