

Kv11.1 Polyclonal Antibody

Description

Product type	Primary Antibody
Code	BT-AP10793
Host	Rabbit
Isotype	IgG
Size	20ul, 50ul, 100ul
Immunogen	Synthetic Peptide of Kv11.1
Mol wt	N/A
Species reactivity	Rat, Mouse
Clonality	Polyclonal
Recommended application	WB, IHC-p, IF
Concentration	1 mg/ml
Full name	Potassium voltage-gated channel subfamily V member 2
Synonyms	Potassium voltage-gated channel subfamily V member 2 ;Voltage-gated potassium channel subunit Kv8.2; KCNV2; Potassium voltage-gated channel subfamily V member 2; Voltage-gated potassium channel subunit Kv8.2

This product is for research use only, not for use in human, therapeutic or diagnostic procedure.

Background

Voltage-gated potassium (Kv) channels represent the most complex class of voltage-gated ion channels from both functional and structural standpoints. Their diverse functions include regulating neurotransmitter release, heart rate, insulin secretion, neuronal excitability, epithelial electrolyte transport, smooth muscle contraction, and cell volume. This gene encodes a member of the potassium voltage-gated channel subfamily V. This member is identified as a 'silent subunit', and it does not form homomultimers, but forms heteromultimers with several other subfamily members. Through obligatory heteromerization, it exerts a function-altering effect on other potassium channel subunits. This protein is strongly expressed in pancreas and has a weaker expression in several other tissues.

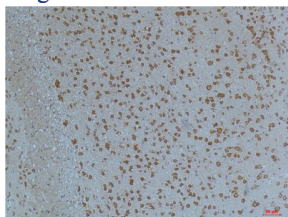
Recommended Dilution

WB: 1: 1000 - 1: 2000

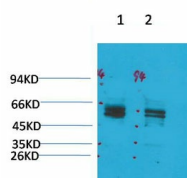
IHC: 1: 100 - 1: 200

Not yet tested in other applications.

Images



Immunohistochemical analysis of paraffin-embedded Mouse Brain Tissue using Kv11.1 Rabbit pAb diluted at 1:200.



Western blot analysis of 1) Rat Brain Tissue, 2) Mouse Brain Tissue with KV11.1 Rabbit pAb diluted at 1:2,000.

Storage

-20°C for 1 year

501 Changsheng S Rd, Nanhu Dist, Jiaxing, Zhejiang, China

Tel: 86 21 31007137 | E-mail: save@bt-laboratory.com | www.bt-laboratory.com