

L-type Ca⁺⁺ CP gamma4 Polyclonal Antibody

Description

Product type	Primary Antibody
Code	BT-AP10813
Host	Rabbit
Isotype	IgG
Size	20ul, 50ul, 100ul
Immunogen	Synthetic Peptide of L-type Ca ⁺⁺ CP γ 4
Mol wt	N/A
Species reactivity	Human, Mouse, Rat
Clonality	Polyclonal
Recommended application	WB, IHC-p, IF
Concentration	N/A
Full name	Voltage-dependent calcium channel gamma-4 subunit
Synonyms	Voltage-dependent calcium channel gamma-4 subunit; CACNG4; Voltage-dependent calcium channel gamma-4 subunit; Neuronal voltage-gated calcium channel gamma-4 subunit; Transmembrane AMPAR regulatory protein gamma-4; TARP gamma-4

This product is for research use only, not for use in human, therapeutic or diagnostic procedure.

Background

The protein encoded by this gene is a type I transmembrane AMPA receptor regulatory protein (TARP). TARPs regulate both trafficking and channel gating of the AMPA receptors. This gene is part of a functionally diverse eight-member protein subfamily of the PMP-22/EMP/MP20 family and is located in a cluster with two family members, a type II TARP and a calcium channel gamma subunit.

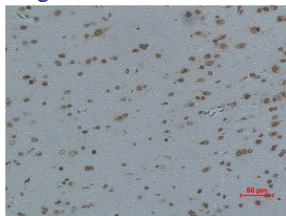
Recommended Dilution

WB: 1: 1000 - 1: 2000

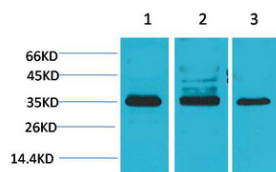
IHC: 1: 200 - 500

Not yet tested in other applications.

Images



Immunohistochemical analysis of paraffin-embedded Rat Brain Tissue using L-type Ca⁺⁺ CP γ 4 Polyclonal Antibody.



Western blot analysis of 1) Human Brain Tissue, 2) Mouse Brain Tissue, 3) Rat Brain Tissue using L-type Ca⁺⁺ CP γ 4 Polyclonal Antibody. Secondary antibody was diluted at 1:20000

Storage

-20°C for 1 year

501 Changsheng S Rd, Nanhu Dist, Jiaxing, Zhejiang, China

Tel: 86 21 31007137 | E-mail: save@bt-laboratory.com | www.bt-laboratory.com