

## KCNK2 Rabbit Polyclonal Antibody

### Description

Product type	Primary Antibody
Code	BT-AP10815
Host	Rabbit
Isotype	IgG
Size	100ul, 50ul, 20ul
Immunogen	Synthesized peptide derived from human KCNK2
Mol wt	46860
Species reactivity	Human, Mouse
Clonality	Polyclonal
Recommended application	WB
Concentration	1 mg/ml
Full name	KCNK2
Synonyms	KCNK2

This product is for research use only, not for use in human, therapeutic or diagnostic procedure.

### Background

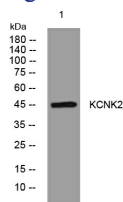
This gene encodes one of the members of the two-pore-domain background potassium channel protein family. This type of potassium channel is formed by two homodimers that create a channel that leaks potassium out of the cell to control resting membrane potential. The channel can be opened| however| by certain anesthetics| membrane stretching| intracellular acidosis| and heat. Three transcript variants encoding different isoforms have been found for this gene.

### Recommended Dilution

WB: 1: 500 - 1: 2000

Not yet tested in other applications.

### Images



Western blot analysis of lysates from A549 cells, primary antibody was diluted at 1:1000, 4°C overnight

### Storage

-20°C for 1 year