

KIF24 Rabbit Polyclonal Antibody

Description

Product type	Primary Antibody
Code	BT-AP10831
Host	Rabbit
Isotype	IgG
Size	100ul, 50ul, 20ul
Immunogen	Synthesized peptide derived from human KIF24
Mol wt	150480
Species reactivity	Human, Mouse
Clonality	Polyclonal
Recommended application	WB
Concentration	1 mg/ml
Full name	KIF24
Synonyms	KIF24

This product is for research use only, not for use in human, therapeutic or diagnostic procedure.

Background

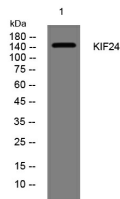
Kinesins such as KIF24 are microtubule-dependent ATPases that function as molecular motors. They play important roles in intracellular vesicle transport and cell division (summary by Venturelli et al. 2010)

Recommended Dilution

WB: 1: 500 - 1: 2000

Not yet tested in other applications.

Images



Western blot analysis of lysates from K562 cells, primary antibody was diluted at 1:1000, 4°C overnight

Storage

-20°C for 1 year

501 Changsheng S Rd, Nanhu Dist, Jiaxing, Zhejiang, China

Tel: 86 21 31007137 | E-mail: save@bt-laboratory.com | www.bt-laboratory.com