

## KLDC9 Rabbit Polyclonal Antibody

### Description

|                         |  |
|-------------------------|--|
| Product type            | Primary Antibody                             |
| Code                    | BT-AP10848                                   |
| Host                    | Rabbit                                       |
| Isotype                 | IgG  |
| Size                    | 100ul, 50ul, 20ul                            |
| Immunogen               | Synthesized peptide derived from human KLDC9 |
| Mol wt                  | 38390  |
| Species reactivity      | Human, Mouse                                 |
| Clonality               | Polyclonal                                   |
| Recommended application | WB   |
| Concentration           | 1 mg/ml                                      |
| Full name               | KLDC9  |
| Synonyms                | KLDC9  |

This product is for research use only, not for use in human, therapeutic or diagnostic procedure.

### Background

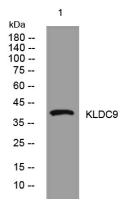
N/A

### Recommended Dilution

WB: 1: 500 - 1: 2000

Not yet tested in other applications.

### Images



Western blot analysis of lysates from MDA-MB cells, primary antibody was diluted at 1:1000, 4°C overnight

### Storage

-20°C for 1 year

501 Changsheng S Rd, Nanhu Dist, Jiaxing, Zhejiang, China

Tel: 86 21 31007137 | E-mail: [save@bt-laboratory.com](mailto:save@bt-laboratory.com) | [www.bt-laboratory.com](http://www.bt-laboratory.com)