

LC3B Polyclonal Antibody

Description

Product type	Primary Antibody
Code	BT-AP10857
Host	Rabbit
Isotype	IgG
Size	20ul, 50ul, 100ul
Immunogen	Recombinant Protein of MAP LC3 β
Mol wt	N/A
Species reactivity	Human, Mouse, Rat
Clonality	Polyclonal
Recommended application	WB, IF, ICC, IHC-p
Concentration	N/A
Full name	Microtubule-associated proteins 1A/1B light chain 3B
Synonyms	Microtubule-associated proteins 1A/1B light chain 3B; MAP1LC3B; MAP1ALC3; Microtubule-associated proteins 1A/1B light chain 3B; Autophagy-related protein LC3 B; Autophagy-related ubiquitin-like modifier LC3 B; MAP1 light chain 3-like protein 2; MAP1A/MAP1B light chain 3 B; MAP1A/MAP1B LC3 B; Microtubule-associated protein 1 light chain 3 beta

This product is for research use only, not for use in human, therapeutic or diagnostic procedure.

Background

The product of this gene is a subunit of neuronal microtubule-associated MAP1A and MAP1B proteins, which are involved in microtubule assembly and important for neurogenesis. Studies on the rat homolog implicate a role for this gene in autophagy, a process that involves the bulk degradation of cytoplasmic component.

Recommended Dilution

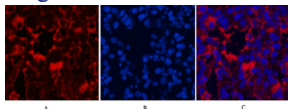
WB: 1: 1000 - 1: 2000

IHC: 1: 200 - 500

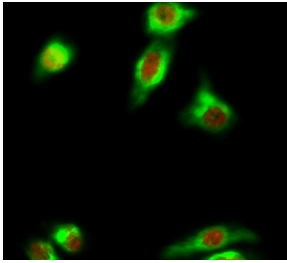
IF: 1: 200

Not yet tested in other applications.

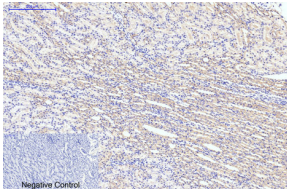
Images



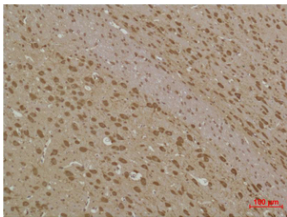
Immunofluorescence analysis of HeLa cell. Cleaved-PARP-1 (D214) Polyclonal Antibody(Red) was diluted at 1:200(4°C overnight). LC3B Polyclonal Antibody(Green) was diluted at 1:200(4°C overnight).



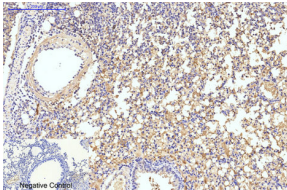
Immunofluorescence analysis of Mouse-lung tissue. 1,LC3B Polyclonal Antibody(Red) was diluted at 1:200(4°C overnight). 2, Cy3 labeled Secondary antibody was diluted at 1:300(room temperature, 50min), 3, Picture B: DAPI(blue) 10min. Picture A:Target. Picture B: DAPI. Picture C: merge of A+B



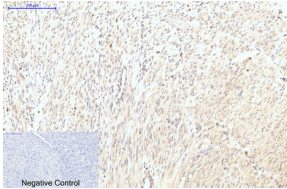
Immunohistochemical analysis of paraffin-embedded Human-uterus-cancer tissue. 1,LC3B Polyclonal Antibody was diluted at 1:200(4°C overnight). 2, Sodium citrate pH 6.0 was used for antibody retrieval(>98°C,20min). 3,Secondary antibody was diluted at 1:200(room temperature, 30min). Negative control was used by secondary antibody only.



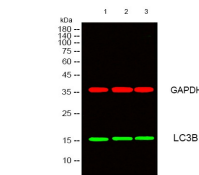
Immunohistochemical analysis of paraffin-embedded Rat-kidney tissue. 1,LC3B Polyclonal Antibody was diluted at 1:200(4°C overnight). 2, Sodium citrate pH 6.0 was used for antibody retrieval(>98°C,20min). 3,Secondary antibody was diluted at 1:200(room temperature, 30min). Negative control was used by secondary antibody only.



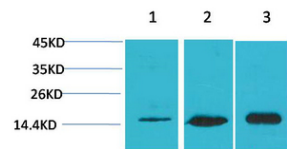
Immunohistochemical analysis of paraffin-embedded Mouse-lung tissue. 1,LC3B Polyclonal Antibody was diluted at 1:200(4°C overnight). 2, Sodium citrate pH 6.0 was used for antibody retrieval(>98°C,20min). 3,Secondary antibody was diluted at 1:200(room temperature, 30min). Negative control was used by secondary antibody only.



Immunohistochemical analysis of paraffin-embedded Rat BrainTissue using MAP LC3β Polyclonal Antibody.



Western blot analysis of lysates from 1) HeLa, 2) 3T3, 3) Rat Brain Tissue cells, (Green) primary antibody was diluted at 1:1000, 4°C overnight, secondary antibody was diluted at 1:10000, 37°C 1 hour. (Red) GAPDH Monoclonal Antibody(2B8) antibody was diluted at 1:5000 as loading control, 4°C overnight,secondary antibody was diluted at 1:10000, 37°C 1 hour.



Western blot analysis of 1) HeLa, 2) 3T3, 3) Rat Brain Tissue using MAP LC3β Polyclonal Antibody. Secondary antibody was diluted at 1:20000

Storage

-20°C for 1 year

501 Changsheng S Rd, Nanhu Dist, Jiaxing, Zhejiang, China

Tel: 86 21 31007137 | E-mail: save@bt-laboratory.com | www.bt-laboratory.com