

LC7L3 Polyclonal Antibody

Description

Product type	Primary Antibody
Code	BT-AP10858
Host	Rabbit
Isotype	IgG
Size	20ul, 50ul, 100ul
Immunogen	Synthesized peptide derived from part region of human protein
Mol wt	N/A
Species reactivity	Human, Mouse
Clonality	Polyclonal
Recommended application	WB, ELISA
Concentration	1 mg/ml
Full name	Luc7-like protein 3
Synonyms	Luc7-like protein 3 ;Cisplatin resistance-associated-overexpressed protein;Luc7A;Okadaic acid-inducible phosphoprotein OA48-18;cAMP regulatory element-associated protein 1;CRE-associated prote

This product is for research use only, not for use in human, therapeutic or diagnostic procedure.

Background

This gene encodes a protein with an N-terminal half that contains cysteine/histidine motifs and leucine zipper-like repeats, and the C-terminal half is rich in arginine and glutamate residues (RE domain) and arginine and serine residues (RS domain). This protein localizes with a speckled pattern in the nucleus, and could be involved in the formation of spliceosome via the RE and RS domains. Two alternatively spliced transcript variants encoding the same protein have been found for this gene.

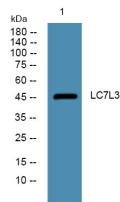
Recommended Dilution

WB: 1: 500 - 1: 2000

ELISA: 1: 5000 - 1: 20000

Not yet tested in other applications.

Images



Western blot analysis of lysates from SW480 cells, primary antibody was diluted at 1:1000, 4°C overnight

Storage

-20°C for 1 year