

## KLP6 Rabbit Polyclonal Antibody

### Description

|                                |   |
|--------------------------------|---|
| <b>Product type</b>            | Primary Antibody  |
| <b>Code</b>                    | BT-AP10865  |
| <b>Host</b>                    | Rabbit  |
| <b>Isotype</b>                 | IgG   |
| <b>Size</b>                    | 100ul, 50ul, 20ul                                       |
| <b>Immunogen</b>               | Synthesized peptide derived from human KLP6             |
| <b>Mol wt</b>                  | N/A   |
| <b>Species reactivity</b>      | Human, Mouse, Rat                                       |
| <b>Clonality</b>               | Polyclonal  |
| <b>Recommended application</b> | WB  |
| <b>Concentration</b>           | 1 mg/ml   |
| <b>Full name</b>               | KLP6  |
| <b>Synonyms</b>                | KLP6; Kinesin-like protein KLP6; Kinesin-like protein 6 |

This product is for research use only, not for use in human, therapeutic or diagnostic procedure.

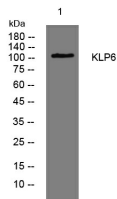
### Background

#### Recommended Dilution

WB: 1: 500 - 1: 2000

Not yet tested in other applications.

### Images



### Storage

-20°C for 1 year

501 Changsheng S Rd, Nanhu Dist, Jiaxing, Zhejiang, China

Tel: 86 21 31007137 | E-mail: [save@bt-laboratory.com](mailto:save@bt-laboratory.com) | [www.bt-laboratory.com](http://www.bt-laboratory.com)