

LDHA Polyclonal Antibody

Description

Product type	Primary Antibody
Code	BT-AP10871
Host	Rabbit
Isotype	IgG
Size	20ul, 50ul, 100ul
Immunogen	Synthesized peptide derived from part region of human protein
Mol wt	N/A
Species reactivity	Human, Rat, Mouse
Clonality	Polyclonal
Recommended application	WB, ELISA
Concentration	1 mg/ml
Full name	L-lactate dehydrogenase A chain
Synonyms	L-lactate dehydrogenase A chain ;LDH-A;EC 1.1.1.27;Cell proliferation-inducing gene 19 protein;LDH muscle subunit;LDH-M;Renal carcinoma antigen NY-REN-59

This product is for research use only, not for use in human, therapeutic or diagnostic procedure.

Background

The protein encoded by this gene catalyzes the conversion of L-lactate and NAD to pyruvate and NADH in the final step of anaerobic glycolysis. The protein is found predominantly in muscle tissue and belongs to the lactate dehydrogenase family. Mutations in this gene have been linked to exertional myoglobinuria. Multiple transcript variants encoding different isoforms have been found for this gene. The human genome contains several non-transcribed pseudogenes of this gene.

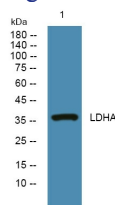
Recommended Dilution

WB: 1: 500 - 1: 2000

ELISA: 1: 5000 - 1: 20000

Not yet tested in other applications.

Images



Western blot analysis of lysates from SW480 cells, primary antibody was diluted at 1:1000, 4°C overnight

Storage

-20°C for 1 year