

## LDHD Polyclonal Antibody

### Description

<b>Product type</b>	Primary Antibody
<b>Code</b>	BT-AP10874
<b>Host</b>	Rabbit
<b>Isotype</b>	IgG
<b>Size</b>	20ul, 50ul, 100ul
<b>Immunogen</b>	Recombinant Protein of LDHD
<b>Mol wt</b>	N/A
<b>Species reactivity</b>	Human, Mouse, Rat
<b>Clonality</b>	Polyclonal
<b>Recommended application</b>	WB
<b>Concentration</b>	N/A
<b>Full name</b>	Probable D-lactate dehydrogenase, mitochondrial
<b>Synonyms</b>	Probable D-lactate dehydrogenase, mitochondrial; Probable D-lactate dehydrogenase, mitochondrial; DLD; Lactate dehydrogenase D; EC 1.1.2.4

This product is for research use only, not for use in human, therapeutic or diagnostic procedure.

### Background

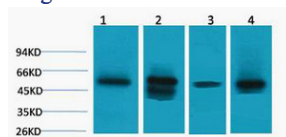
The protein encoded by this gene belongs to the D-isomer specific 2-hydroxyacid dehydrogenase family. The similar protein in yeast has both D-lactate and D-glycerate dehydrogenase activities. Alternative splicing occurs at this locus and two transcript variants encoding distinct isoforms have been identified.

### Recommended Dilution

WB: 1: 1000 - 5000

Not yet tested in other applications.

### Images



Western blot analysis of 1) HeLa, 2) Mouse Skeletal Muscle, 3) Mouse Liver, 4) Rat Kidney, diluted at 1:5000. Secondary antibody was diluted at 1:20000

### Storage

-20°C for 1 year

501 Changsheng S Rd, Nanhu Dist, Jiaxing, Zhejiang, China

Tel: 86 21 31007137 | E-mail: [save@bt-laboratory.com](mailto:save@bt-laboratory.com) | [www.bt-laboratory.com](http://www.bt-laboratory.com)