

KPB2 Rabbit Polyclonal Antibody

Description

Product type	Primary Antibody
Code	BT-AP10877
Host	Rabbit
Isotype	IgG
Size	100ul, 50ul, 20ul
Immunogen	Synthesized peptide derived from human KPB2
Mol wt	135850
Species reactivity	Human, Mouse
Clonality	Polyclonal
Recommended application	WB
Concentration	1 mg/ml
Full name	KPB2
Synonyms	KPB2

This product is for research use only, not for use in human, therapeutic or diagnostic procedure.

Background

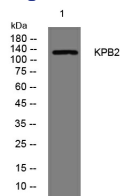
Phosphorylase kinase is a polymer of 16 subunits| four each of alpha| beta| gamma and delta. The alpha subunit includes the skeletal muscle and hepatic isoforms| and the hepatic isoform is encoded by this gene. The beta subunit is the same in both the muscle and hepatic isoforms| and encoded by one gene. The gamma subunit also includes the skeletal muscle and hepatic isoforms| which are encoded by two different genes. The delta subunit is a calmodulin and can be encoded by three different genes. The gamma subunits contain the active site of the enzyme| whereas the alpha and beta subunits have regulatory functions controlled by phosphorylation. The delta subunit mediates the dependence of the enzyme on calcium concentration. Mutations in this gene cause glycogen storage disease type 9A| also known as X-linked liver glycogenosis. Alternatively spliced transcript variants have been reported| but the full-length nature of these variants has not been determined.

Recommended Dilution

WB: 1: 500 - 1: 2000

Not yet tested in other applications.

Images



Western blot analysis of lysates from MCF-7 cells, primary antibody was diluted at 1:1000, 4°C overnight

Storage

-20°C for 1 year