

LIM and SH3 domain protein 1 Polyclonal Antibody

Description

Product type	Primary Antibody
Code	BT-AP10906
Host	Rabbit
Isotype	IgG
Size	20ul, 50ul, 100ul
Immunogen	Synthesized peptide derived from human LIM and SH3 domain protein 1. at AA range: 90-130
Mol wt	N/A
Species reactivity	Human, Mouse, Rat
Clonality	Polyclonal
Recommended application	WB, ELISA
Concentration	1 mg/ml
Full name	LIM and SH3 domain protein 1
Synonyms	LIM and SH3 domain protein 1; LIM and SH3 domain protein 1; LASP-1; Metastatic lymph node gene 50 protein; MLN 50

This product is for research use only, not for use in human, therapeutic or diagnostic procedure.

Background

This gene encodes a member of a subfamily of LIM proteins, characterized by a LIM motif and a domain of Src homology region 3, and also a member of the nebulin family of actin-binding proteins. The encoded protein is a cAMP and cGMP dependent signaling protein and binds to the actin cytoskeleton at extensions of the cell membrane. The encoded protein has been linked to metastatic breast cancer, hematopoietic tumors such as B-cell lymphomas, and colorectal cancer.

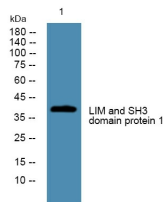
Recommended Dilution

WB: 1: 500 - 1: 2000

ELISA: 1: 10000 - 1: 20000

Not yet tested in other applications.

Images



Western blot analysis of lysates from U2OS cells, primary antibody was diluted at 1:1000, 4°C overnight

Storage

-20°C for 1 year