

KRA14 Rabbit Polyclonal Antibody

Description

Product type	Primary Antibody
Code	BT-AP10915
Host	Rabbit
Isotype	IgG
Size	100ul, 50ul, 20ul
Immunogen	Synthesized peptide derived from human KRA14
Mol wt	13310
Species reactivity	Human, Mouse
Clonality	Polyclonal
Recommended application	WB
Concentration	1 mg/ml
Full name	KRA14
Synonyms	KRA14

This product is for research use only, not for use in human, therapeutic or diagnostic procedure.

Background

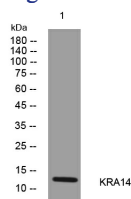
The main structural proteins of mammalian hair fiber are the hair keratins (see MIM 601077) and the keratin-associated proteins (KAPs) which form a rigid and resistant hair shaft through extensive disulfide bond crosslinking with the abundant cysteines of hair keratins (Shimomura et al. | 2002

Recommended Dilution

WB: 1: 500 - 1: 2000

Not yet tested in other applications.

Images



Western blot analysis of lysates from DU145 cells, primary antibody was diluted at 1:1000, 4°C overnight

Storage

-20°C for 1 year

501 Changsheng S Rd, Nanhu Dist, Jiaxing, Zhejiang, China

Tel: 86 21 31007137 | E-mail: save@bt-laboratory.com | www.bt-laboratory.com