

KTNB1 Rabbit Polyclonal Antibody

Description

Product type	Primary Antibody
Code	BT-AP10945
Host	Rabbit
Isotype	IgG
Size	100ul, 50ul, 20ul
Immunogen	Synthesized peptide derived from human KTNB1
Mol wt	72050
Species reactivity	Human, Mouse
Clonality	Polyclonal
Recommended application	WB
Concentration	1 mg/ml
Full name	KTNB1
Synonyms	KTNB1

This product is for research use only, not for use in human, therapeutic or diagnostic procedure.

Background

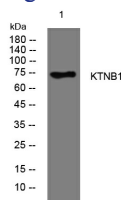
Microtubules| polymers of alpha and beta tubulin subunits| form the mitotic spindle of a dividing cell and help to organize membranous organelles during interphase. Katanin is a heterodimer that consists of a 60 kDa ATPase (p60 subunit A 1) and an 80 kDa accessory protein (p80 subunit B 1). The p60 subunit acts to sever and disassemble microtubules| while the p80 subunit targets the enzyme to the centrosome. Katanin is a member of the AAA family of ATPases.

Recommended Dilution

WB: 1: 500 - 1: 2000

Not yet tested in other applications.

Images



Western blot analysis of lysates from 293T cells, primary antibody was diluted at 1:1000, 4°C overnight

Storage

-20°C for 1 year