

LPAR4 Polyclonal Antibody

Description

Product type	Primary Antibody
Code	BT-AP10952
Host	Rabbit
Isotype	IgG
Size	20ul, 50ul, 100ul
Immunogen	Synthesized peptide derived from human protein . at AA range: 10-90
Mol wt	N/A
Species reactivity	Human, Mouse
Clonality	Polyclonal
Recommended application	WB, ELISA
Concentration	1 mg/ml
Full name	Lysophosphatidic acid receptor 4
Synonyms	Lysophosphatidic acid receptor 4 ;LPA receptor 4;LPA-4;G-protein coupled receptor 23;P2Y purinoceptor 9;P2Y9;P2Y5-like receptor;Purinergic receptor 9

This product is for research use only, not for use in human, therapeutic or diagnostic procedure.

Background

This gene encodes a member of the lysophosphatidic acid receptor family. It may also be related to the P2Y receptors, a family of receptors that bind purine and pyrimidine nucleotides and are coupled to G proteins. The encoded protein may play a role in monocytic differentiation.

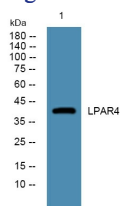
Recommended Dilution

WB: 1: 500 - 1: 2000

ELISA: 1: 5000 - 1: 20000

Not yet tested in other applications.

Images



Western blot analysis of lysates from Jarkat cells, primary antibody was diluted at 1:1000, 4°C overnight

Storage

-20°C for 1 year