

LPAR6 Polyclonal Antibody

Description

Product type	Primary Antibody
Code	BT-AP10953
Host	Rabbit
Isotype	IgG
Size	20ul, 50ul, 100ul
Immunogen	Synthesized peptide derived from human protein . at AA range: 70-150
Mol wt	N/A
Species reactivity	Human, Rat, Mouse
Clonality	Polyclonal
Recommended application	WB, ELISA
Concentration	1 mg/ml
Full name	Lysophosphatidic acid receptor 6
Synonyms	Lysophosphatidic acid receptor 6 ;LPA receptor 6;LPA-6;Oleoyl-L-alpha-lysophosphatidic acid receptor;P2Y purinoceptor 5;P2Y5;Purinergic receptor 5;RB intron encoded G-protein coupled recep

This product is for research use only, not for use in human, therapeutic or diagnostic procedure.

Background

The protein encoded by this gene belongs to the family of G-protein coupled receptors, that are preferentially activated by adenosine and uridine nucleotides. This gene aligns with an internal intron of the retinoblastoma susceptibility gene in the reverse orientation. Alternative splicing results in multiple transcript variants.

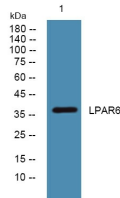
Recommended Dilution

WB: 1: 500 - 1: 2000

ELISA: 1: 5000 - 1: 20000

Not yet tested in other applications.

Images



Western blot analysis of lysates from U2OS cells, primary antibody was diluted at 1:1000, 4°C overnight

Storage

-20°C for 1 year