

## LACB2 Rabbit Polyclonal Antibody

### Description

|                                |  |
|--------------------------------|--|
| <b>Product type</b>            | Primary Antibody                             |
| <b>Code</b>                    | BT-AP10970                                   |
| <b>Host</b>                    | Rabbit                                       |
| <b>Isotype</b>                 | IgG  |
| <b>Size</b>                    | 100ul, 50ul, 20ul                            |
| <b>Immunogen</b>               | Synthesized peptide derived from human LACB2 |
| <b>Mol wt</b>                  | 31680  |
| <b>Species reactivity</b>      | Human, Mouse, Rat                            |
| <b>Clonality</b>               | Polyclonal                                   |
| <b>Recommended application</b> | WB   |
| <b>Concentration</b>           | 1 mg/ml                                      |
| <b>Full name</b>               | LACB2  |
| <b>Synonyms</b>                | LACB2  |

This product is for research use only, not for use in human, therapeutic or diagnostic procedure.

### Background

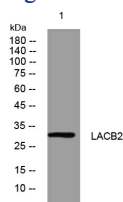
N/A

### Recommended Dilution

WB: 1: 500 - 1: 2000

Not yet tested in other applications.

### Images



### Storage

-20°C for 1 year

501 Changsheng S Rd, Nanhu Dist, Jiaxing, Zhejiang, China

Tel: 86 21 31007137 | E-mail: [save@bt-laboratory.com](mailto:save@bt-laboratory.com) | [www.bt-laboratory.com](http://www.bt-laboratory.com)